

# DART®

## FOR TEST STATION

Above Ground Remote Monitoring

The DART® for Test Station is a multipurpose monitoring unit that functions as a standalone data logger for a Cathodic Protection Test Station.

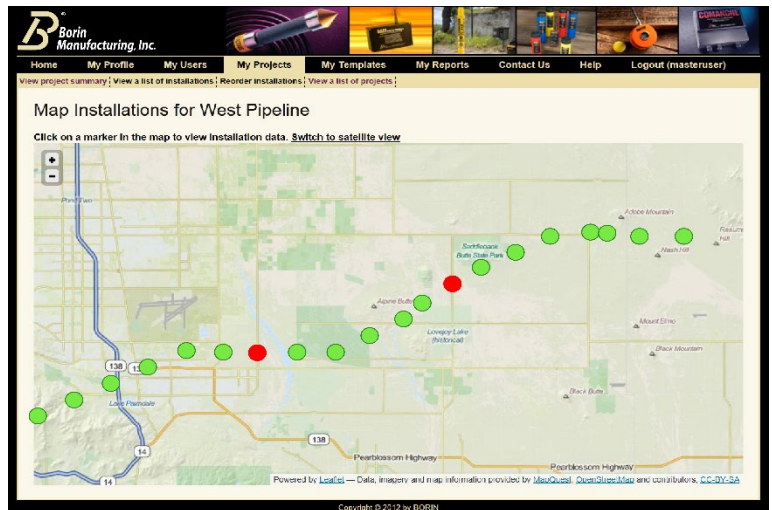
### USER INTERFACE

The BORIN® DATA CENTER software allows you to manage your whole system from one single screen.

Imagine a map of your facility or pipeline system in your computer screen; now you can retrieve all the readings of that critical test station by clicking on that location on your map.

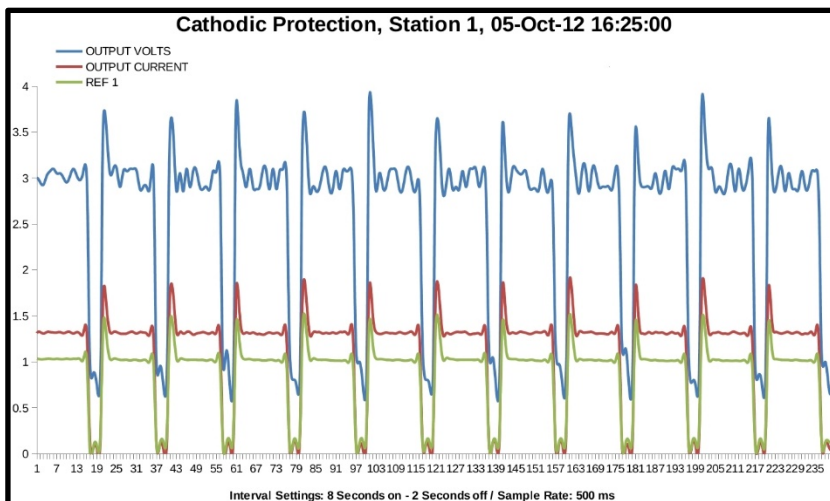
The BORIN® DATA CENTER user interface is intuitive and easy to navigate at any user level.

Your Cathodic Protection system can be accessed from any authorized computer, tablet or smart phone.



### COMMUNICATION

Information is transmitted from the field to the data center and vice versa through the GSM cellular network.



### DATA INTEGRITY

Data Transmission is protected by a sophisticated encryption system that ensures that the information will be safe and accurate.

All the information is downloaded and stored in a data center and cannot be altered.

You can always access historical data for diagnosis and analysis.

### DATA ANALYSIS & ALARMS

You can export reports and graphics into virtually any format such as Excel, PDF, JPEG, etc.

Instant Off potential readings presented in graphics for easy analysis.

Complete alarm system with text message and e-mail capabilities.

Smart phone optimized web access to get your readings while in the field.

**BORIN Manufacturing, Inc.**

5741 Buckingham Parkway, Office Building B, Culver City, CA 90230

Office : +1 (310) 822-1000 | Facsimile : +1 (310) 338-3434 | www.borin.com



# DART<sup>®</sup>

## FOR TEST STATION

### Above Ground Remote Monitoring

### SMART. COMPACT. RUGGED.

- **Miniaturized:** Fits inside top hat style **BULLET<sup>®</sup>BOX** test station pole.
- **Rugged:** For extreme weather conditions.
- **Easy to install:** With color coded terminals to make intuitive wire connections. Consistent with **STELTH<sup>®</sup> 7**
- **Long lasting battery power:** Up to 5 years in normal operating conditions.

### REMOTE READINGS OF

- Pipe to Soil Potential
- On & Instant Off Potential
- Native Potential
- 100 mV Shift and Depolarization
- AC Readings to Monitor AC Mitigation
- Current Density AC & DC
- Check for Dynamic Stray Currents

### HARDWARE FEATURES

- Surge-protected analog inputs
- 20M $\Omega$  impedance for reference electrode readings

### CHANNEL RANGES

- -10 to +10 VDC
- 0 to 20 VAC

### COMMUNICATION OPTIONS:

- GSM

### DATA LOGGER

- Included in all Dart<sup>™</sup> products

### UNLIMITED STORAGE CAPACITY

#### PROVIDED BY:

- Local memory in device
- Data center

### POWER

- Long-life Lithium Battery

### OPERATING TEMPERATURE

- -40° C to +85° C (-40° F to +185° F)

### COMPATIBLE WITH EXISTING DATA BASES

- ProActive<sup>®</sup>
- Bass<sup>®</sup> Trigon
- Etc.

### DIMENSIONS

- Height: 26", Diameter 3" (can vary)

### MATERIALS

- Fade-proof, bullet-resistant ABS plastic outside, military-grade electronics inside

### OPTIONAL SECONDARY ENCLOSURE

- Dimensions: 36" X 6" X 6"
- Powder coated steel
- Complies with NEMA 12, IP54



### BORIN Manufacturing, Inc.

5741 Buckingham Parkway, Office Building B, Culver City, CA 90230

Office : +1 (310) 822-1000 | Facsimile : +1 (310) 338-3434 | [www.borin.com](http://www.borin.com)

